

## SPECIFICATIONS

### Structure

- The structure of the Villas will be earthquake resistant excellent quality RCC framed structure with brick walls.

### Living/Dining/Lobby

- Flooring - Good quality Marble / Vitrified tiles.
- Walls/Ceiling - POP on the walls and POP false ceiling with Plastic paint.
- Provisions - Excellent quality modular switches and electrical points for TV, AC and Telephones.

### Bedroom

- Flooring - Wooden Flooring in the master bedroom and superior quality Vitrified tile flooring in other bedrooms.
- Walls/Ceiling - Putty finished with plastic emulsion paint.
- Provisions - Adequate electrical points with modular switches.

### Toilet

- Flooring - Anti skid ceramic tiles with skirting.
- Walls/Ceiling - Designer tiles with border/ motifs
- Plumbing - Concealed plumbing for hot and cold water supply with G.I pipes
- Fitting and fixtures - CP fitting of Jaguar or equivalent standard make. Sanitary wares of Hindware / Cera.

### Kitchen

- Flooring - Vitrified tiles of superior quality.
- Walls - Superior quality designer tiles
- Platform - Granite platform with double bowl SS Sink and C.P Mixer of Jaquar or equivalent make.
- Provisions - Water Purifier or Reverse Osmosis system (RO), Exhaust Fan.

### Balcony

- Flooring - Exterior grade tile flooring and skirting of superior quality.
- Walls/Ceiling - Texture Paints finish on the walls and plastic emulsion paint on the ceiling.
- Provisions - MS railing as per elevation.

### Electric Work

- Switches - Modular switches of superior make like MK/Havells/Crabtree or equivalent make.
- Wiring - Copper wiring of good ISI marked brand.
- Provisions - Split AC, TV, DTH, Telephone points, Washing Machine and Microwave.

### Exterior finishes

- All weather exterior paint of superior quality

### Others

- Designer entrance door of teak wood with high quality SS/Brass fittings. All doors and windows of superior quality wood/powder coated aluminium with brass/ SS fittings.
- SS railing to be provided in the internal staircase.



**Site :** Jhalaria, Near Shishukunj International School, Off Bypass Road, Indore.  
**Office :** Metro Tower, G.F., Scheme No. 54, A.B. Road, Indore-452 001,  
 Tel. : 0731-4208900/53. Mbl. 9630090440, 9406852977.  
 E-mail : countywalk@aaronegroup.com www.aaronegroup.com



# COUNTYWALK

A fully integrated Garden City in Indore

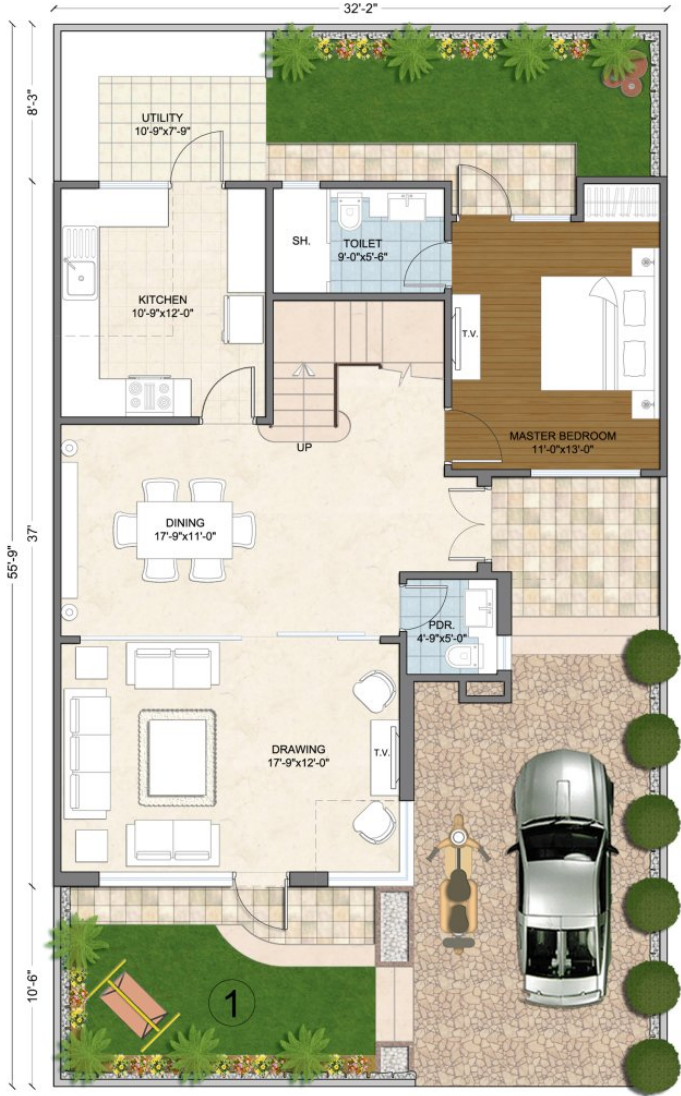
PLOTS | VILLAS | GARDEN HOUSES



## VILLA KENT - Floor Plan & Specifications

Option 1	Option 2	Option 3
2 Bedroom	3 Bedroom	4 Bedroom
1693 Sq.ft.	1891 Sq.ft.	2125 Sq.ft.

### GROUND FLOOR PLAN



### FIRST FLOOR PLAN

